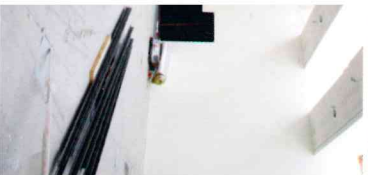


DULEHOUSE PROJECTHOTEL CLUB LAMOT SILOS AUDITORIUM



culatua conveniencidada restorantur man brewerystawell coffee barroom fashion store



the difference in height of the buildings allows for each level to have its own outdoor space

panorama roof terrace

terrace project-hotel 2

riverside terrace

venue with glazed facade facing north, offering generous views onto the city

newly added part, replacing 50% of the concrete silos

silo building sliced in half

LAMOT is a conglomerate of spaces, differing in size and atmosphere. All spaces are available for both congress and cultural purposes

small scale salons

obsolete existing windows are simply bricked in

project-hotel 2: naturally lit

project-hotel 1: artificially lit

concrete silos

Dijle river: LAMOT incorporates the urban romantic potential

entrance with monumental stair, setting the scale of LAMOT

new grand café in existing brewery hall

indoor/outdoor circulation

Meechelen Central: from this level one has an uninhibited view onto the city fabric, on both back and front sides

area surface: 1.340 m²
total built surface: 6.600 m²

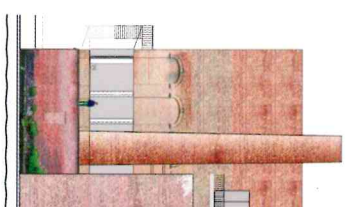
existing elements like the bay window are integrated into the first floor cut

grand café with private entrance mediates between street and first floor

8 m wide street

the commercial spaces are only related to the street

credits:
51N4E: development of concept and design
Architectenkooperaat: execution design



LAMOT™

cultural convention centre Mechelen, Belgium 2005

The client's brief asked for a mix of congress facilities and cultural amenities on the site of an existing brewery.

The original structure is an undecipherable conglomerate of smaller buildings. The LAMOT site, since its origins in 1922, has been part of a continuous process of extension and demolition, a process of straightforward commercial reasoning whereby redundant parts are torn down without any emotion and newly needed infrastructures are simply joined onto the existing core – an unintentional lesson in straightforward reasoning. During the process we eagerly learned from this logic, re-employing it for the future development of LAMOT.

Reconverting this awkward giant into a public building brought to the fore new standards of accessibility, orientation, light and views. It entails action – a surgical operation – on an urban scale. We proposed slitting open the building's first floor – a calculated internal explosion. This new level we called 'Mechelen Central' (MC), a 1,300 m² space leaving no doubt about the future ambition of LAMOT. The result is a 'triple-decker' construction, three zones, each specific in terms of space, waiting to be programmed :

- a 24/7 commercial base (shops, restaurant, micro-brewery) filtering the LAMOT audiences
- an elevated urban foyer (MC), a popular piano noble allowing for informal cultural

consumption, with one fixed element: the reception desk

- a critical mass of project spaces (lounges, auditorium, treasure chamber, banquet hall, kunsthalle), ranging from multi-use to hyper-specific interiors

Aside from the introduction of MC, the original building will be demolished in part (a section of the concrete silos), and in part extended through new construction. This addition, comprising the main entrance, a section of MC, the auditorium and a panoramic roof, is designed as a raw, cantilevered concrete structure wrapped in glass. It is deliberately different from its predecessors yet radically infected by their general sense of awe.

In the end, the project's true intention is to mix culture and commercial activities in an intricate manner, a voluntary clash of substance, whereby commerce is fed by culture and culture can react to commerce (or vice versa).

