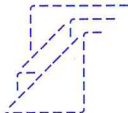
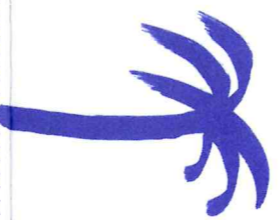
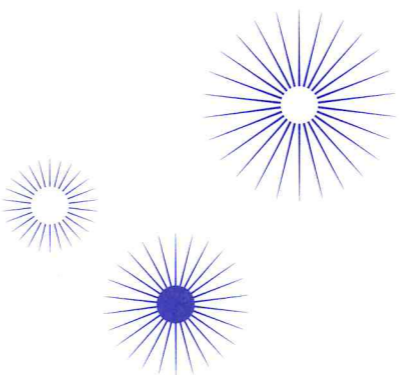
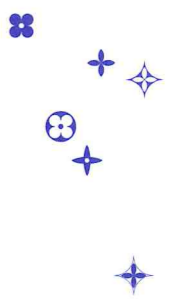


# *Paris* *Sundromme* **HOTEL**



# Paris Syndrome HOTEL

c/o Museum of Contemporary Art (GfZK) Leipzig

*The 'Paris  
Syndrome' Hotel...*

... is a hotel apartment, designed by the artist Jun Yang.  
What is a "Paris Syndrome"?  
The term "Paris Syndrome" is used to describe symptoms suffered by Japanese tourists in Paris, when the reality of the city diverges so much from the picture in their imagination that they experience a kind of negative culture shock, akin to a trauma. So are you likely to suffer a dis-appointment when you book into the 'Paris Syndrome' Hotel?  
Yes and no. We all know the phenomenon that can arise when travelling: reality is unable to do justice to the expectations we have beforehand. This can lead to frustration, but also to

new discoveries, depending on whether or not we are able to let go of our first expectations and remain open to new experiences. The same thing is true of the 'Paris Syndrome' Hotel. Rather than originals, we encounter reproductions – the armchairs are covered with imitation Louis-Vuitton fabric, ostentatious chandeliers hang from the living-room ceiling. The chairs are reminiscent of Charles and Ray Eames designs, whilst the tables refer to French bistro tables. The photographs on the walls depict famous pieces of historical architecture that have been rebuilt in various places throughout the world. Old school maps from the geography class-

room complete the design. Of course, the world has changed considerably since they were drawn, so their educational value has long since become invalid. However, upon second glance the imitations emerge as unique, unconventional interpretations that can easily hold their own against the originals they set out to imitate. And also the school maps, whose information content in fact became obsolete long ago, impress us primarily because of their graphic quality. Once we have become aware of details such as this, there are other unusual features to be discovered.

A visit to the Museum of Contemporary Art in Leipzig (GfZK) provides you with several alternatives: you can visit the exhibitions dealing with important, sometimes controversial questions of contemporary art, take part in one of the innovative media-tion programmes, hold discussions with artists and curators, meet your friends in the café or garden or read the latest publications on contemporary art in the library. The museum shop has unusual products by local designers and the GfZK's own editions of famous contemporary artists on sale. The café, garden, library and shop were all planned and designed by artists, as was the 'Paris Syndrome' Hotel and the new Café KAFIČ.

*Check-In* \*:  
You can check in and collect the keys at Karl-Tauchnitz-Str. 11 (Villa) between 12 am and 7 pm. If you will be arriving later, please ring in advance to let us know ++49.341.140810.  
\* The rooms are ready for occupation any time after 4 pm.

*Check-Out*:  
The rooms are at your disposal until 12 am.  
If you would like to leave before 8 am, please inform us when you check in.

*Breakfast*:  
from 9 am at Café Kowalski,  
Ferdinand-Rhode-Str. 12 **B**  
or from 11 am at  
KAFIČ (café at the GfZK),  
Karl-Tauchnitz-Str. 9 **C**

*Price*:  
100 euro per night for one person,  
20 euro for a second person

*Reservations*:  
Reservations for one to two persons per night and room may be made via internet only:  
[www.hotelgfk.de](http://www.hotelgfk.de)

*Payment*:  
Payment may be made in cash  
or via bank transfer to the GfZK bank account  
before arrival.

*Information*:  
If you have any questions please contact:  
Annett Koch: [office@gfk.de](mailto:office@gfk.de)

However, the hotel itself also fails to conform to certain expectations. It is a hotel attached to an art institution. The check-in and check-out times may seem rather unusual, and the hotel staff is not professionally trained. Rather than a television, guests are provided with a selection of books and a record player for their entertainment. And in place of a standard mini-bar you are greeted with sparkling wine from the region, green tea and water. But the hotel offers you something that other hotels cannot provide – you are part of a living work of art. You can enjoy the unique atmosphere of the 'Paris Syndrome' Hotel, built on two floors, with a living room, bedroom, kitchen units and bathroom. The next morning a French-style breakfast awaits you in the Café Kowalski close by or in the GfZK's own Café KAFIČ. And of course, free admission to the GfZK exhibitions is included in the price!

*About the Artist*:

In his artistic work Jun Yang, who has grown up and lived in various cultural contexts, examines the influence of clichés and media images on identity politics. He has had solo exhibitions and participated in numerous group exhibitions worldwide, as well as carrying out many projects in public spaces. In Taipei, where he lives today, Jun Yang has founded a new institution, the Contemporary Art Centre, together with other artists and curators. He is an Associate Professor at the Arts and Design Department of the Yuanzhe University in Taiwan. As an artist, Jun Yang has been represented by Martin Janda Art Gallery in Vienna, ShugoArts in Tokyo and the Vitamin Creative Space, Beijing.

The museum of Contemporary Art Leipzig  
In 1998, the GfZK moved into the Villa Herfurth next to the Johanna Park, converted by the architect Peter Kulka from Dresden. In 2004 a new exhibition building was added, designed by as-if berlinwien. Both buildings have been awarded several architectural prizes and are in themselves often included in the itinerary of cultural trips.  
The museum initially had the legal status of a limited company, until it became a foundation in 2002.  
The Chairman of the Foundation Board is Dr. Arend Oetker. Today, the running costs of the museum are shared between the Free State of Saxony, the City of Leipzig and the Friends Organisation of the museum.  
The museum's programme receives funding from both the public and the private sector.

Galerie für Zeitgenössische Kunst  
Leipzig / Museum of Contemporary Art  
Leipzig

Karl-Tauchnitz-Str. 9-11  
D-04107 Leipzig  
Telefon: +49 341.140 81-0  
Telefax: +49 341.140 81-11  
E-Mail: [office@gfk.de](mailto:office@gfk.de)  
[www.gfzk.de](http://www.gfzk.de)

Supported by:  
Kulturstiftung des  
Freistaates Sachsen

Kulturstiftung  
des  
Freistaates  
Sachsen